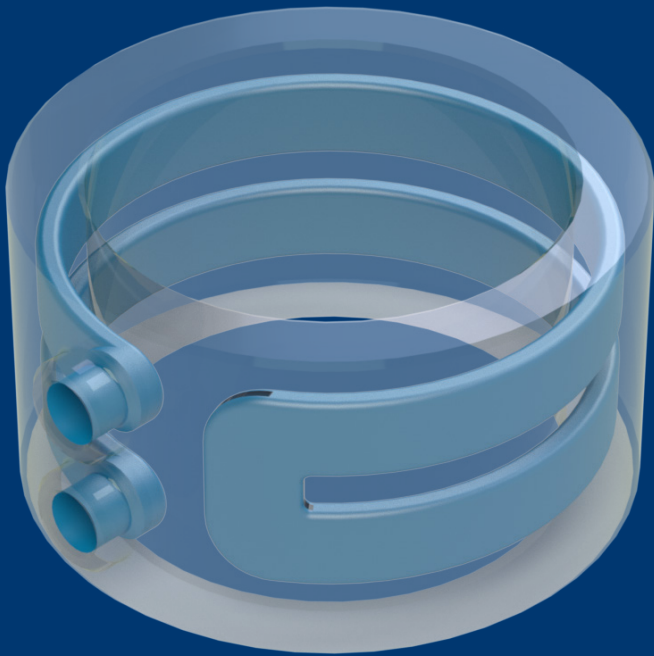


DATA SHEET

Cooling Ring



Cooling Ring



DESCRIPTION

Specially designed cooling rings of high thermal effectiveness are developed. The cooling ring fits the standard dimension shot sleeve and has a separate cooling circuit.

MAIN ADVANTAGES

- High thermal effectiveness for cooling of biscuit area
- No sleeve drilling is required and coolant leakage is prevented

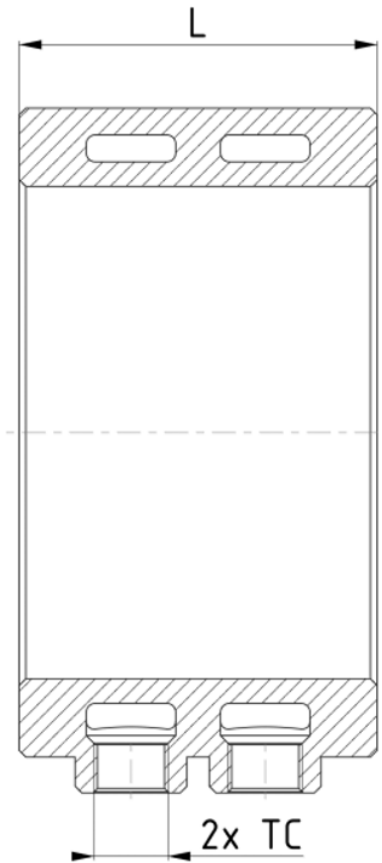
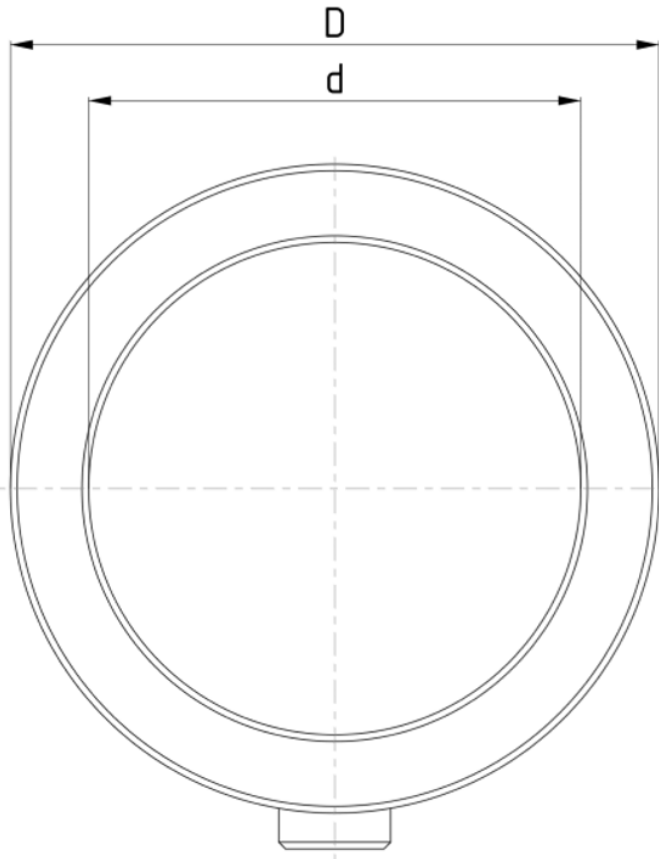
GENERAL DIMENSIONS

Selection of dimension d is available between 80 and 160mm, to fit desired sleeve. Dimension D and L are selected for appropriate fit of cooling ring. Connectors can be selected among the below stated types.

| | Min | Max | Tolerance |
|-----------|---|------|-----------|
| d | 80 | 250 | 135 |
| D | d+30 | d+60 | 135 |
| L | 40 | 200 | 135 |
| TC | R 1/4, R 3/8, R 1/2, 1/4 NPT, 3/8 NPT, 5/8 NPT, 1/2 NPT | | / |

Diameter d refers to sleeve outer diameter
All dimensions are in mm

Cooling Ring



Cooling Ring

**Do you need a slightly different
design or component?**

We got you covered.

Contact our die casting professionals and we will do our best to match your requirements. You can count on us to support you through each step of performance improvement.

sales@hts-ic.com